

Case Study: Lambeth GP Food Co-op

@vesicle

Shuo.Zhang@slam.nhs.uk



Jennie Lee Gardens, 2017
Lambeth GP Food Co-op

6min video

- <http://lambeth.gpfoodcoop.org.uk/>
- A community-led Co-Op of patients, doctors, nurses and Lambeth residents who grow food together in and for the NHS

Overview

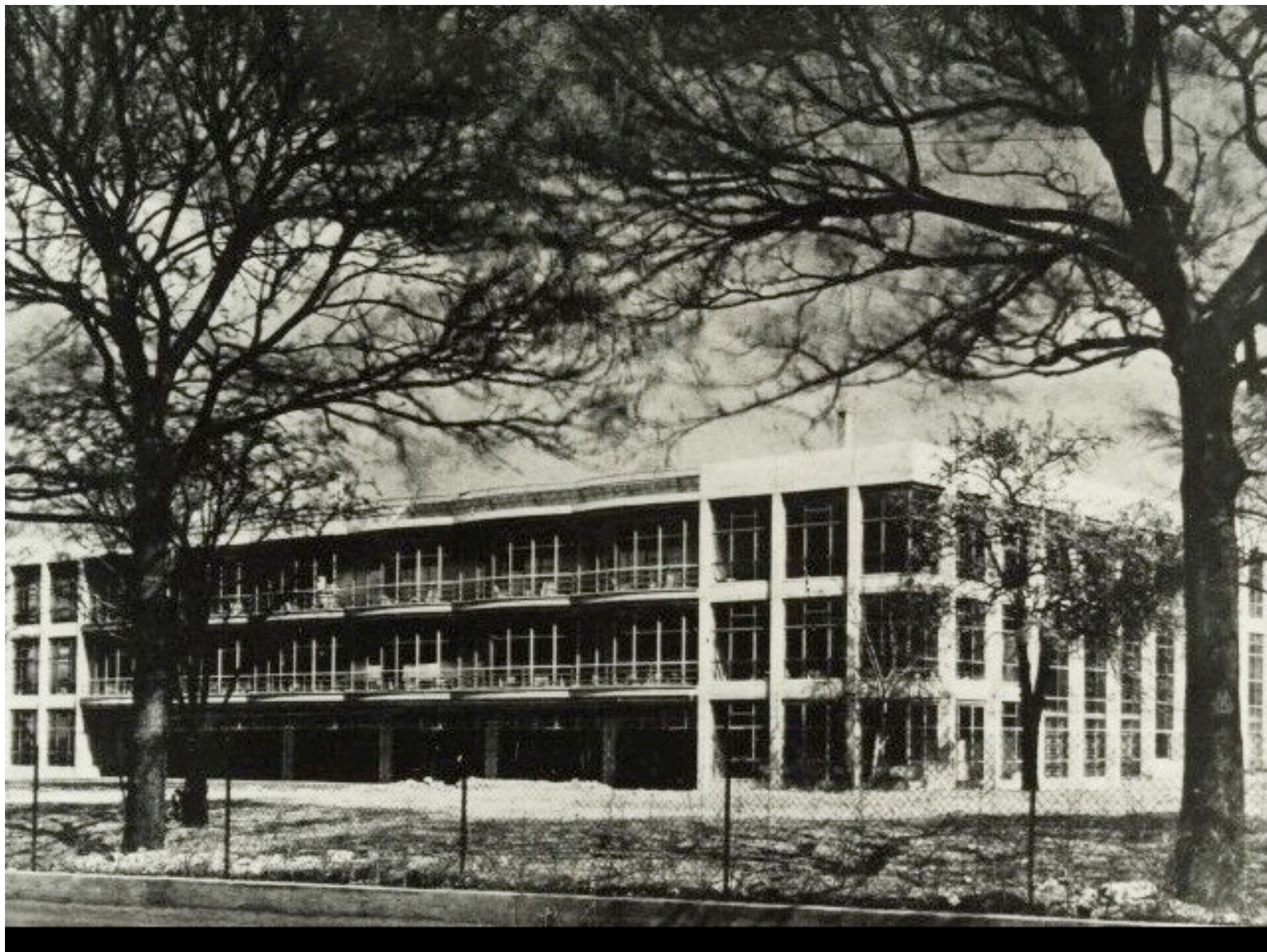
1. The Vision and wider context
2. Experiences of co-operation
3. Challenges
4. How can it apply to your locality?

1. Context: Peckham Experiment

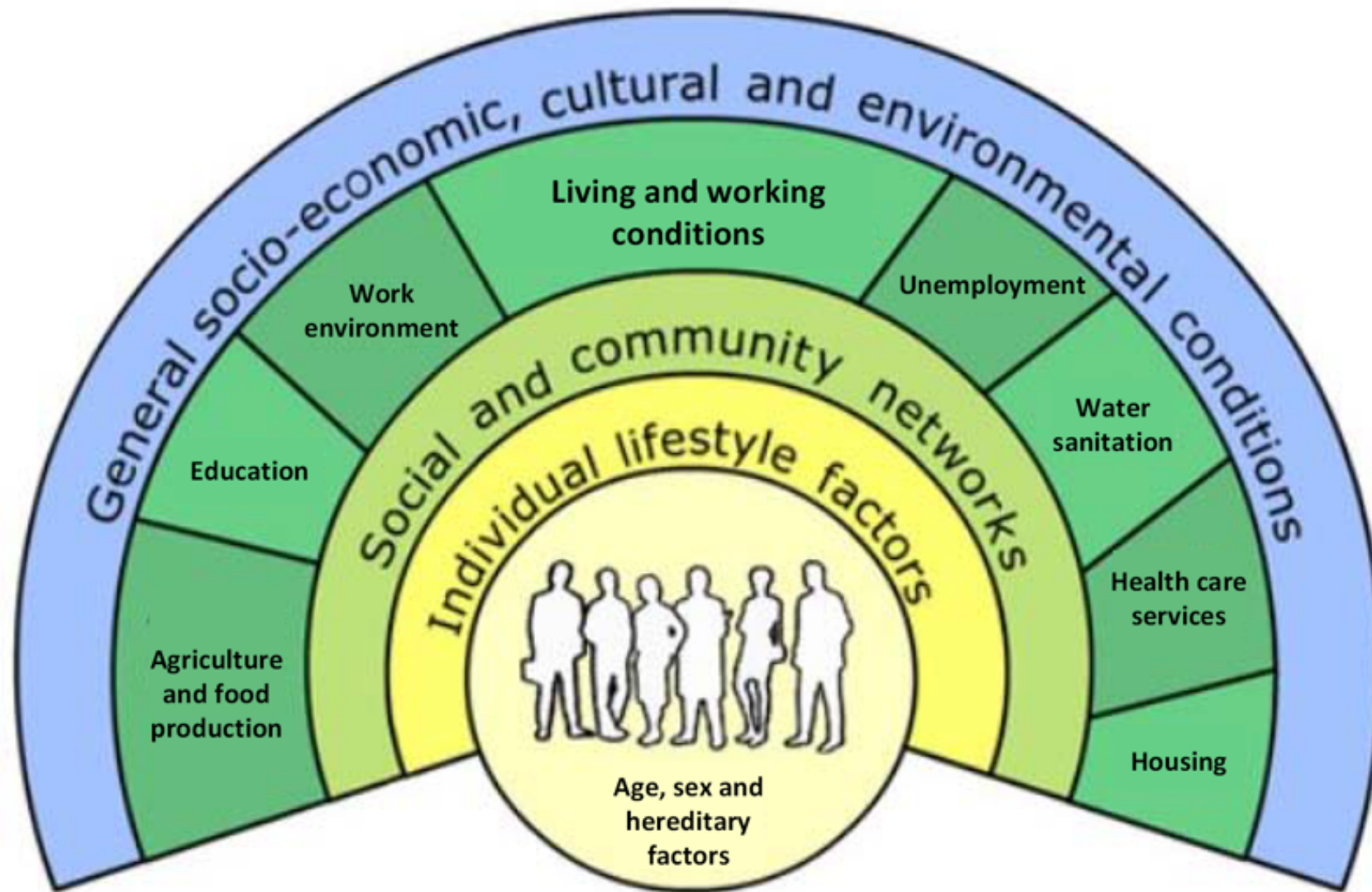
“What does ‘health’ look like? How does health, the process we are here calling functional action, present itself to the eye of the scientific observer? We will begin with a definition: health, i.e. living, or functional existence, depends upon the development and working of a faculty of the organism- the faculty for mutual synthesis of organism and environment”

Dr G. Scott Williamson and Dr Innes H. Pearse, 1965, *Science, Synthesis and Sanity: An enquiry into the nature of Living* by the founders of the Peckham Experiment

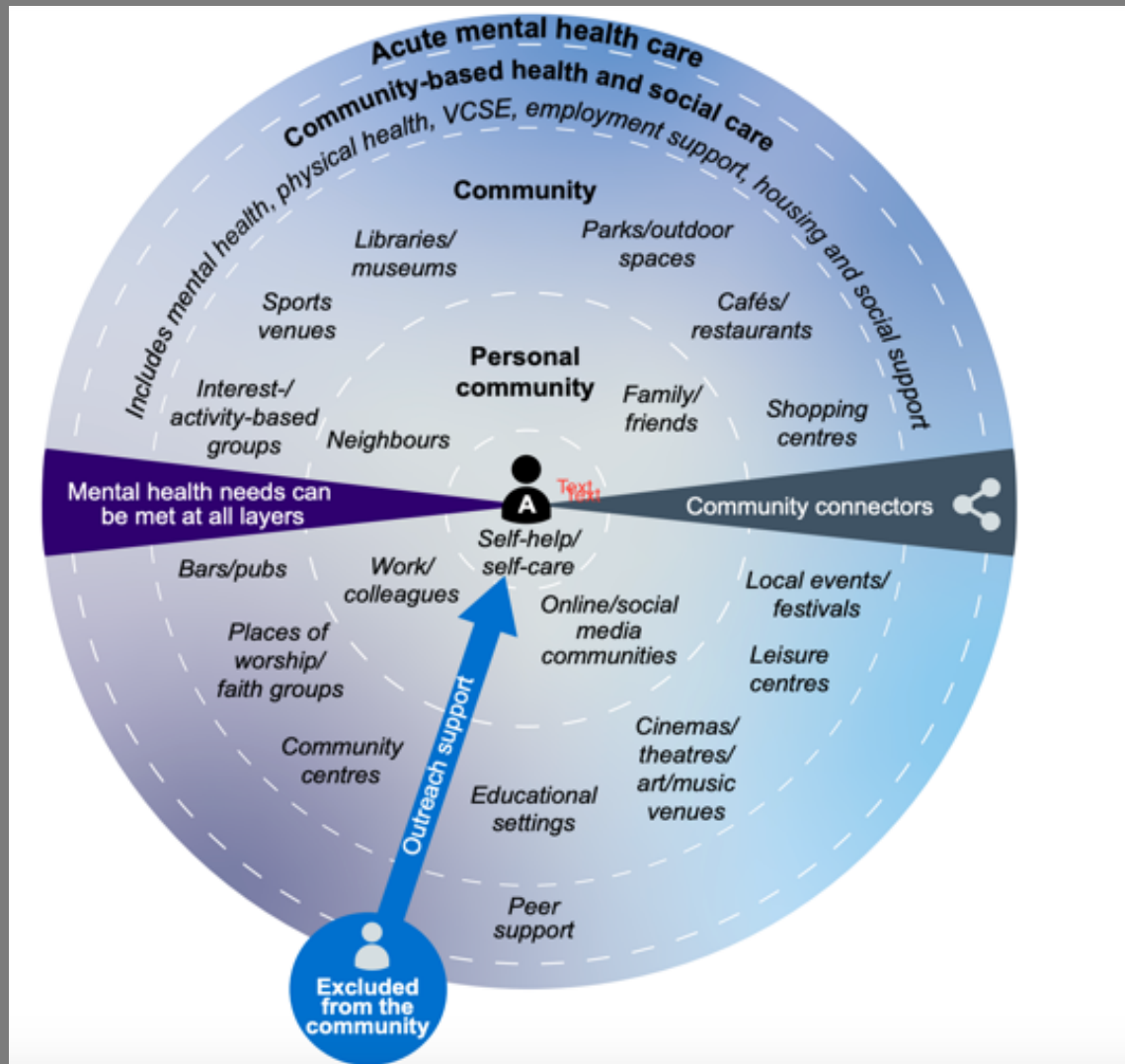




1. Context: Sociocultural & Environmental determinants of health

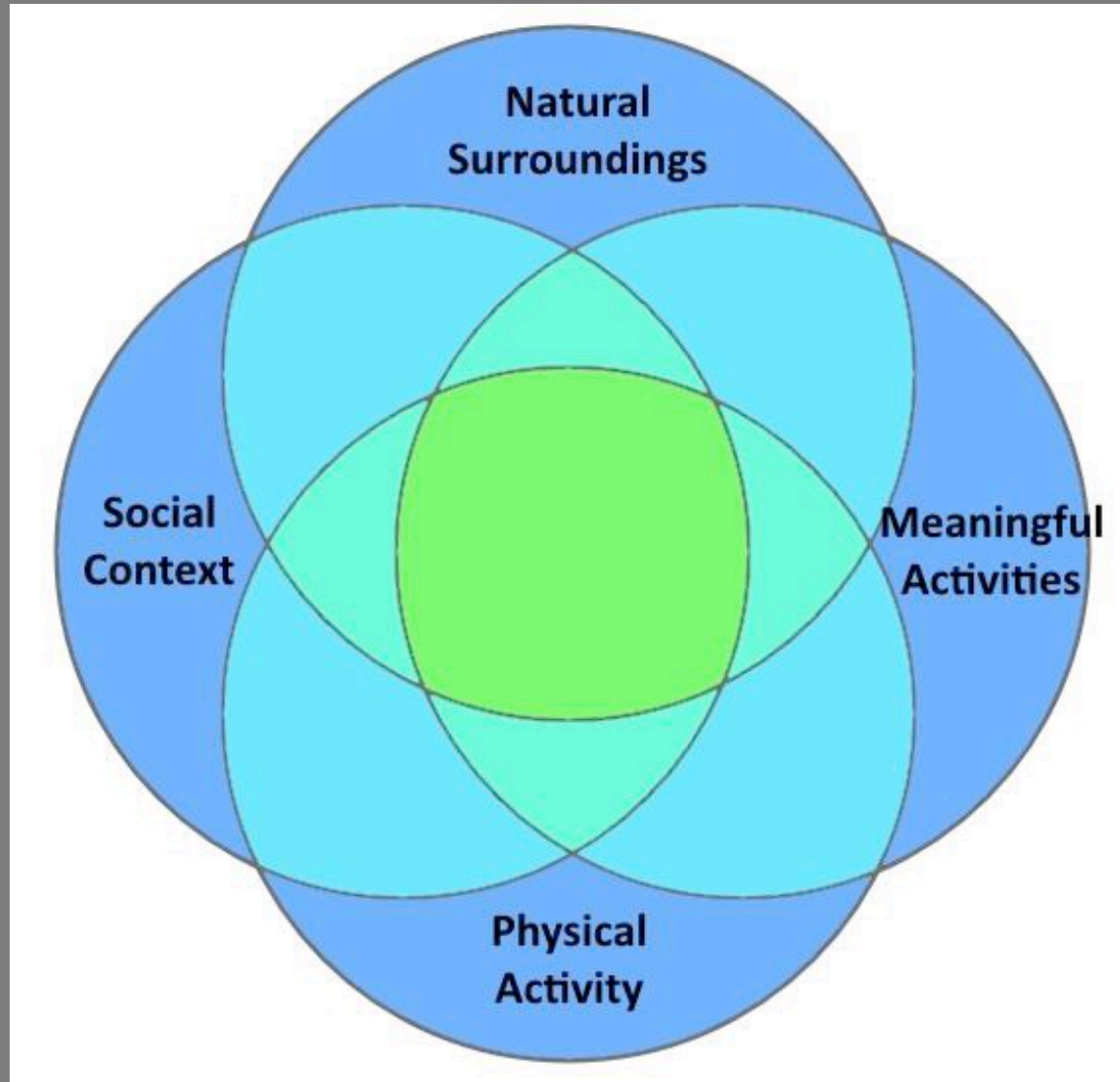


1. Context: The Community Mental Health Framework for Adults and Older Adults



NHS England, NHS
Improvement & National
Collaborating Center for Mental
Health , 2019

2. Experiences of participation-supporting autonomy



Adapted from Bragg, 2014, Bragg and Atkins, 2016

3. Challenges

- Time
 - Healthcare professionals time poor
 - Coop and gardeners volunteer led
 - Expertise & juggling various hats
- Money
 - Funding security (tricky as not a charity)
 - Lots of pots but which one? Public health, horticulture, arts and health, design and infrastructure
- Imagination
 - Complementary or discordant with NHS long term plan
 - Changing physical environments in order to change relationships

4. How can it
apply to your
locality?

